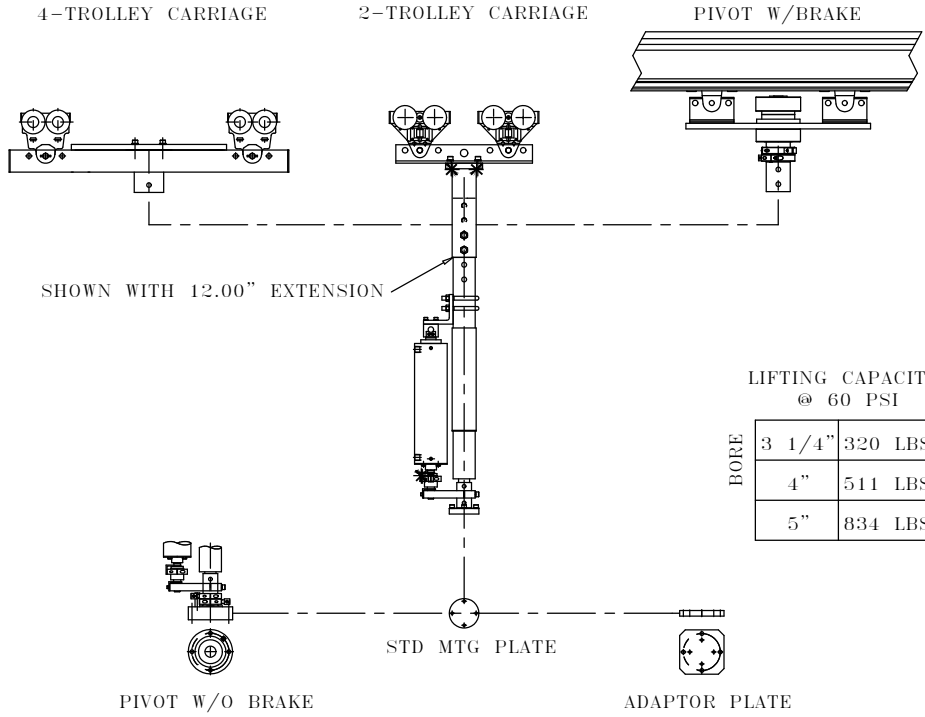


500 NM TORQUE TUBE



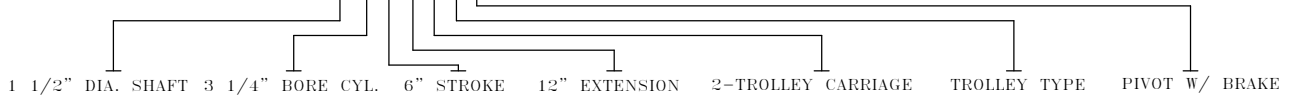
LIFTING CAPACITY
@ 60 PSI

| BORE | 3 1/4" | 320 LBS |
|------|--------|---------|
| | 4" | 511 LBS |
| | 5" | 834 LBS |

| BASIC TORQUE TUBE | | | | | OPTIONS | | | | | | | |
|-------------------|---------------|--------|--------|-----|----------------|----------|--------------------|-----------|--------------|-------------------|------------------|---|
| MODEL | CYLINDER BORE | | STROKE | | EXTENSION TUBE | | TROLLEY SUSPENSION | | TROLLEY TYPE | | PIVOT / CONTROLS | |
| 24 | 1 | 3 1/4" | 1 | 6" | 0 | 12" STD. | 0 | NONE | 0 | NONE | 0 | NONE |
| | 2 | 4" | 2 | 12" | 1 | 24" | 1 | 2-TROLLEY | A | UNIFIED #20115 | 1 | PIVOT W/O BRAKE |
| | 3 | 5" | 3 | 18" | 2 | 36" | 2 | 4-TROLLEY | B | UNIFIED #20021 | 2 | PIVOT W/ BRAKE |
| | | | 4 | 24" | 3 | 48" | | | C | UNIFIED #20065 | 3 | BALANCE REGULATOR W/ BALL CHECK VALVE |
| | | | 5 | 30" | 4 | 60" | | | D | UNIFIED #MBC-500 | | |
| | | | 6 | 36" | | | | | E | UNIFIED #MBC-1000 | 4 | BALANCE REGULATOR W/ PILOT CHECK VALVE |
| | | | | | | | | | F | KNIGHT - MRTA4001 | | |
| | | | | | | | | | G | KNIGHT - MRTA7706 | 5 | HOIST UP/ DOWN |
| | | | | | | | | | H | KNIGHT - MRTA5301 | 6 | HOIST DOWN/AUTO UP |
| | | | | | | | | | J | KNIGHT - MRTA5501 | | |
| | | | | | | | | | K | KBK1 - 980 610 44 | | |
| | | | | | | | | | L | KBK2 - 982 110 44 | | |
| | | | | | | | | | M | ZRA1 - 30279 | | |
| | | | | | | | | | N | ZRA1 - 30259 | | |
| | | | | | | | | | P | ZRA2 - 30015 | | |
| | | | | | | | | | R | ZRA2 - 30016 | | |
| | | | | | | | | | S | ZRA2 - 30131 | | |
| | | | | | | | | | T | ZRS2 - 30510 | | |
| | | | | | | | | | U | ZRS2 - 30511 | | |
| | | | | | | | | | V | ZRS2 - 30561 | | |
| | | | | | | | | | W | GORBEL - A0501 | | |
| | | | | | | | | | X | GORBEL - A1001 | | |

(EXAMPLE PART # 2421-12A2)

BREAKDOWN OF EXAMPLE PART #24 2 1-0 2 A 2



- NOTES: 1) CUSTOMER TO SPECIFY TROLLEY TYPE.
 2) WHEN ORDERING PIVOT WITH BRAKE, PIVOT WILL BE CONNECTED TO TROLLEY SUSPENSION.
 3) FINISH TO BE POWER COAT SILVER & BLACK OXIDE.
 4) 12" EXTENSION PROVIDED WITH STANDARD TORQUE TUBE.