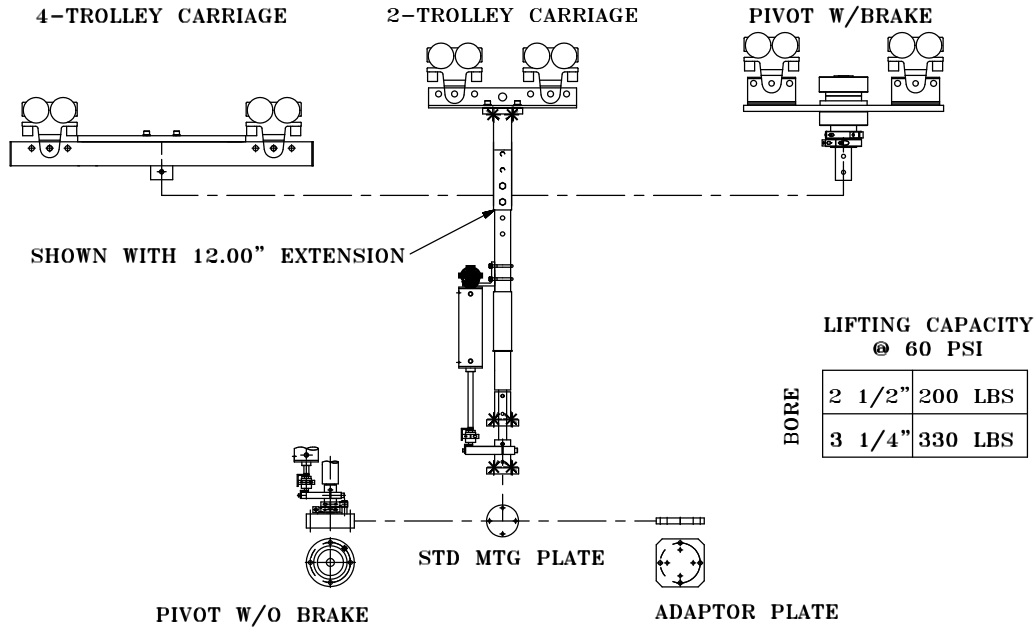


225 NM TORQUE TUBE



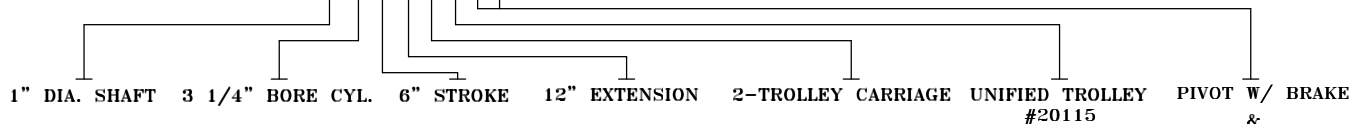
LIFTING CAPACITY
@ 60 PSI

BORE	2 1/2"	200 LBS
BORE	3 1/4"	330 LBS

BASIC TORQUE TUBE					OPTIONS							
MODEL	CYLINDER BORE		STROKE		EXTENSION TUBE		TROLLEY SUSPENSION		TROLLEY TYPE		PIVOT / CONTROLS	
16	1	2 1/2"	1	6"	0	12" STD.	0	NONE	0	NONE	0	NONE
	2	3 1/4"	2	12"	1	24"	1	2-TROLLEY	A	UNIFIED #20115	1	PIVOT W/O BRAKE
			3	18"	2	36"	2	4-TROLLEY	B	UNIFIED #20021	2	PIVOT W/ BRAKE
			4	24"	3	48"			C	UNIFIED #20065	3	BALANCE REGULATOR
					4	60"			D	UNIFIED #MBC-500		W/ BALL CHECK VALVE
									E	UNIFIED #MBC-1000	4	BALANCE REGULATOR
									F	KNIGHT - MRTA4001		W/ PILOT CHECK VALVE
									G	KNIGHT - MRTA7706	5	HOIST UP/ DOWN
									H	KNIGHT - MRTA5301	6	HOIST DOWN/AUTO UP
									J	KNIGHT - MRTA5501		
									K	KBK1 - 980 610 44		
									L	KBK2 - 982 110 44		
									M	ZRA1 - 30279		
									N	ZRA1 - 30259		
									P	ZRA2 - 30015		
									R	ZRA2 - 30016		
									S	ZRA2 - 30126		
									T	ZRS2 - 30510		
									U	ZRS2 - 30511		
									V	ZRS2 - 30561		
									W	GORBEL - A0501		
									X	GORBEL - A1001		

(EXAMPLE PART # 1621-02A23)

BREAKDOWN OF EXAMPLE PART #16 2 1-0 2 A 2 3



NOTES: 1) CUSTOMER TO SPECIFY TROLLEY TYPE.

2) WHEN ORDERING PIVOT WITH BRAKE, PIVOT WILL BE CONNECTED TO TROLLEY SUSPENSION.

3) FINISH TO BE POWER COAT SILVER & BLACK OXIDE.

4) 12" EXTENSION PROVIDED WITH STANDARD TORQUE TUBE.

BALANCE REGULATOR
W/ BALL CHECK VALVE