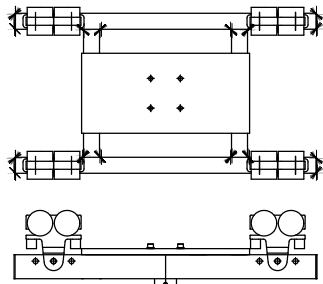
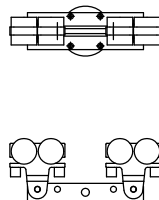


# 225 NM TORQUE TUBE

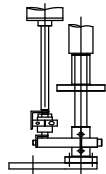
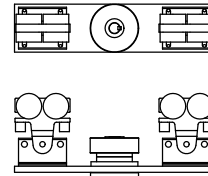
4-TROLLEY CARRIAGE



2-TROLLEY CARRIAGE

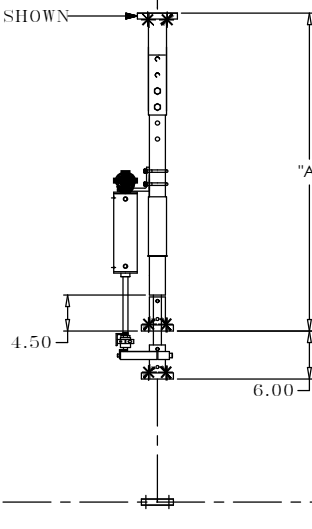


PIVOT W/BRAKE  
(BRAKE CAPACITY 225 NM)

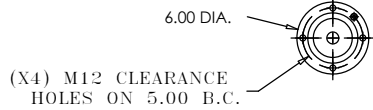
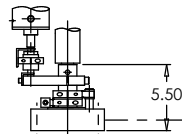


OFFSET OPTION:  
OFFSET DISTANCE  
OFFSET DIRECTION-IN LINE W/ CYLINDER  
CAN NOT BE PERPENDICULAR TO CYLINDER

12" EXTENSION SHOWN

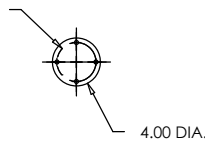


6" STROKE SHOWN  
(UNIT MAY BE ADJUSTED UP OR DOWN 4")

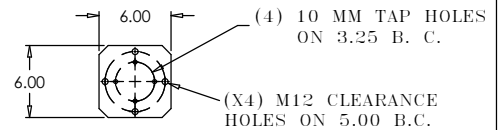


PIVOT W/O BRAKE

(4) M10 CLEARANCE HOLES ON 3.25 B.C.



STD MTG PLATE



ADAPTOR PLATE

STROKE	DIM	
		"A"
6"	39.75	
12"	45.75	
18"	51.75	
24"	57.75	

BORE	LIFTING CAPACITY @ 60 PSI	
2 1/2"	200 LBS	
3 1/4"	330 LBS	

BORE	OFFSET LOAD CAPACITY @ 60 PSI		
	6.00"	12.00"	18.00"
2 1/2"	*	*	*
3 1/4"	*	*	*